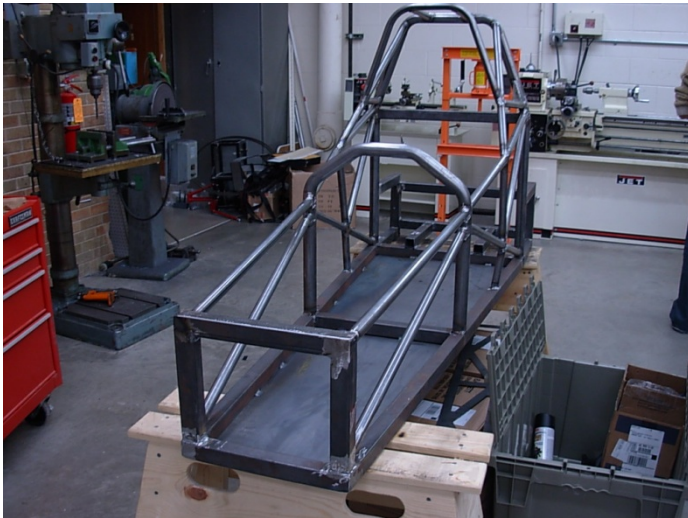
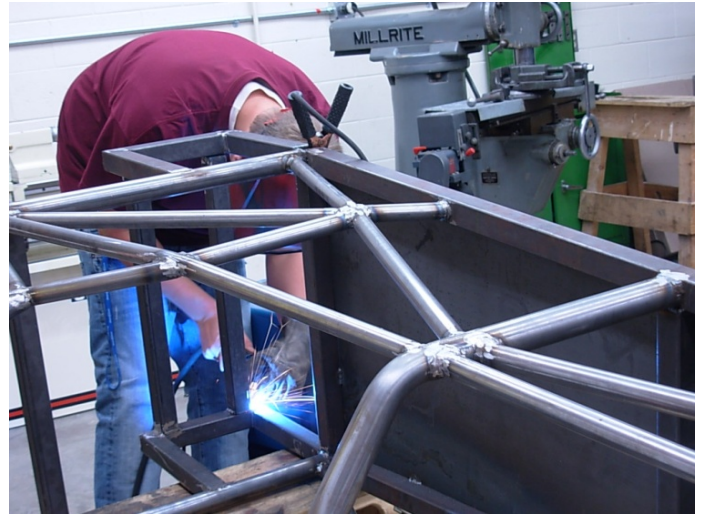


# Update 5

The material for the front axle came in. Vladimir and Alexi made the front axle. Matt and Kong adjusted the engine on the engine mount so that the engine could fit on the chassis. The bottom part of the bar for the engine mount was not on the right place. Matt ground off the bar and Alex re-welded the engine mount bar where it was supposed to be. Alex and Kevin put together the rear axle assembly. We still need the deposit money to order parts and make the body for the chassis.



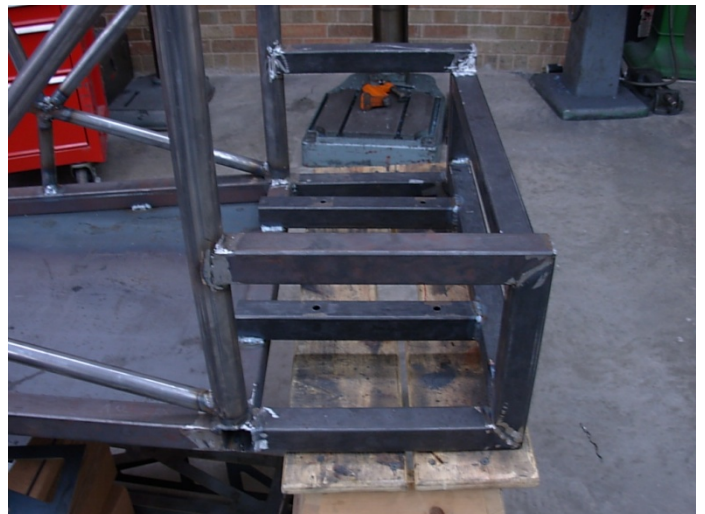
Chassis



Alex fixing the engine mount



Rear Axle Assembly



Engine Mount